

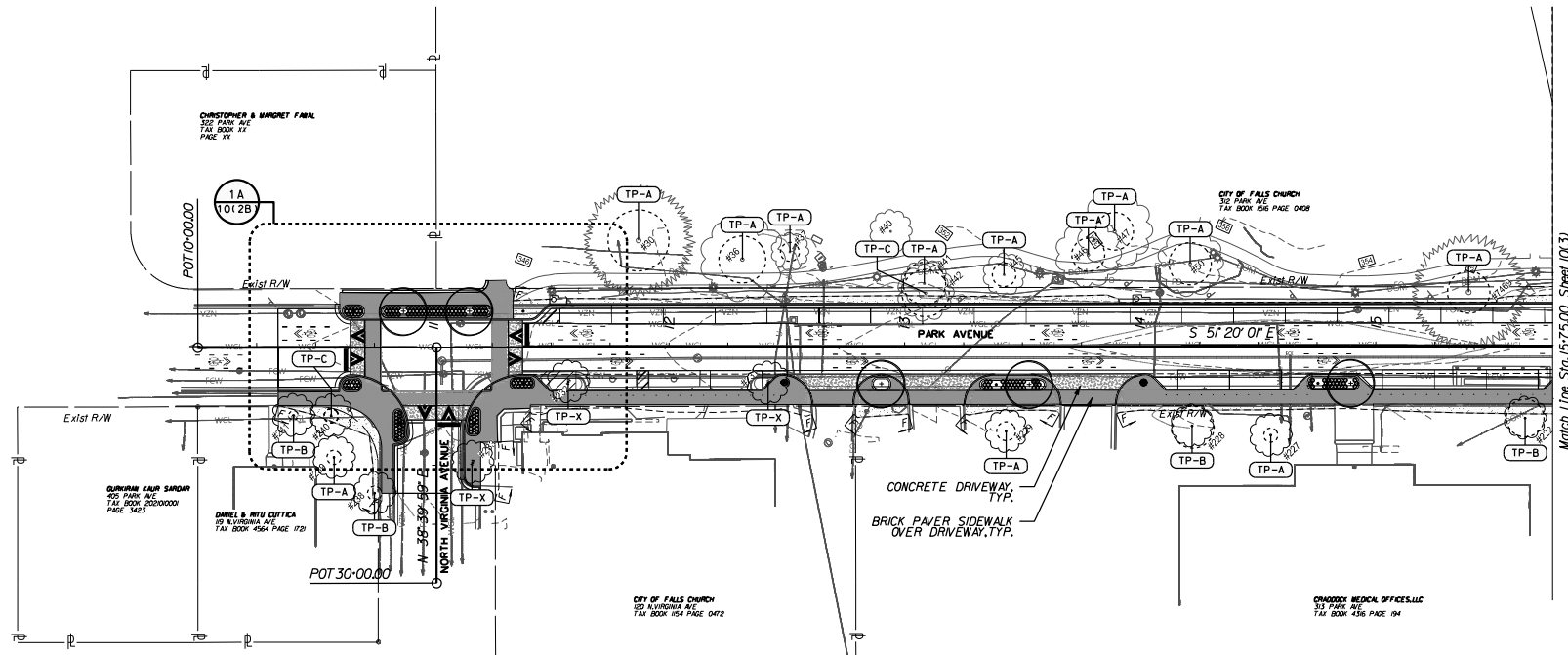
PROJECT MANAGER: *Avery Agre*, City of Falls Church
 SURVEYED BY, DATE: *Christopher Consultants, Ltd.*
 DESIGN BY: *Vohler, Inc.*
 SUBSURFACE UTILITY BY, DATE: *Christopher Consultants, Ltd.*

REVISED	STATE	ROUTE	STATE PROJECT	SHEET NO.
	VA.	N/A	U000-110-195 P101, R201, C501	10(2)

60% PLANS

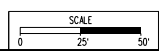
THESE PLANS ARE UNFINISHED AND UNAPPROVED AND ARE NOT TO BE USED FOR ANY TYPE OF CONSTRUCTION OR THE ACQUISITION OF RIGHT OF WAY.

DESIGN FEATURES RELATING TO CONSTRUCTION OR TO REGULATION AND CONTROL OF TRAFFIC MAY BE SUBJECT TO CHANGE AS DEEMED NECESSARY BY THE DEPARTMENT



STREETScape LEGEND

- | | |
|---|--------------------------------------|
| EXISTING TREES | STREETScape ELEMENTS |
| EXISTING DECIDUOUS TREES | RAISED PLANTERS |
| STRUCTURAL CRITICAL ROOT ZONE | DETECTABLE WARNING PAVEMENT |
| EXISTING EVERGREEN TREES | TACTILE DIRECTIONAL WARNING PAVEMENT |
| STRUCTURAL CRITICAL ROOT ZONE | PROTECTIVE BOLLARD |
| TREE NOT IMPACTED / MINIMALLY IMPACTED (TP-A) | STREET LIGHTING |
| TREE MODERATELY IMPACTED (TP-B) | PROPOSED PLANTINGS |
| TREE REQUIRING FURTHER PROTECTIVE MEASURES IN DESIGN DEVELOPMENT (TP-C) | PROPOSED DECIDUOUS TREES |
| TREE TO BE REMOVED (TP-X) | PROPOSED SHRUBS |



STREETScape PLANS

PROJECT	SHEET NO.
U000-110-195	10(2)

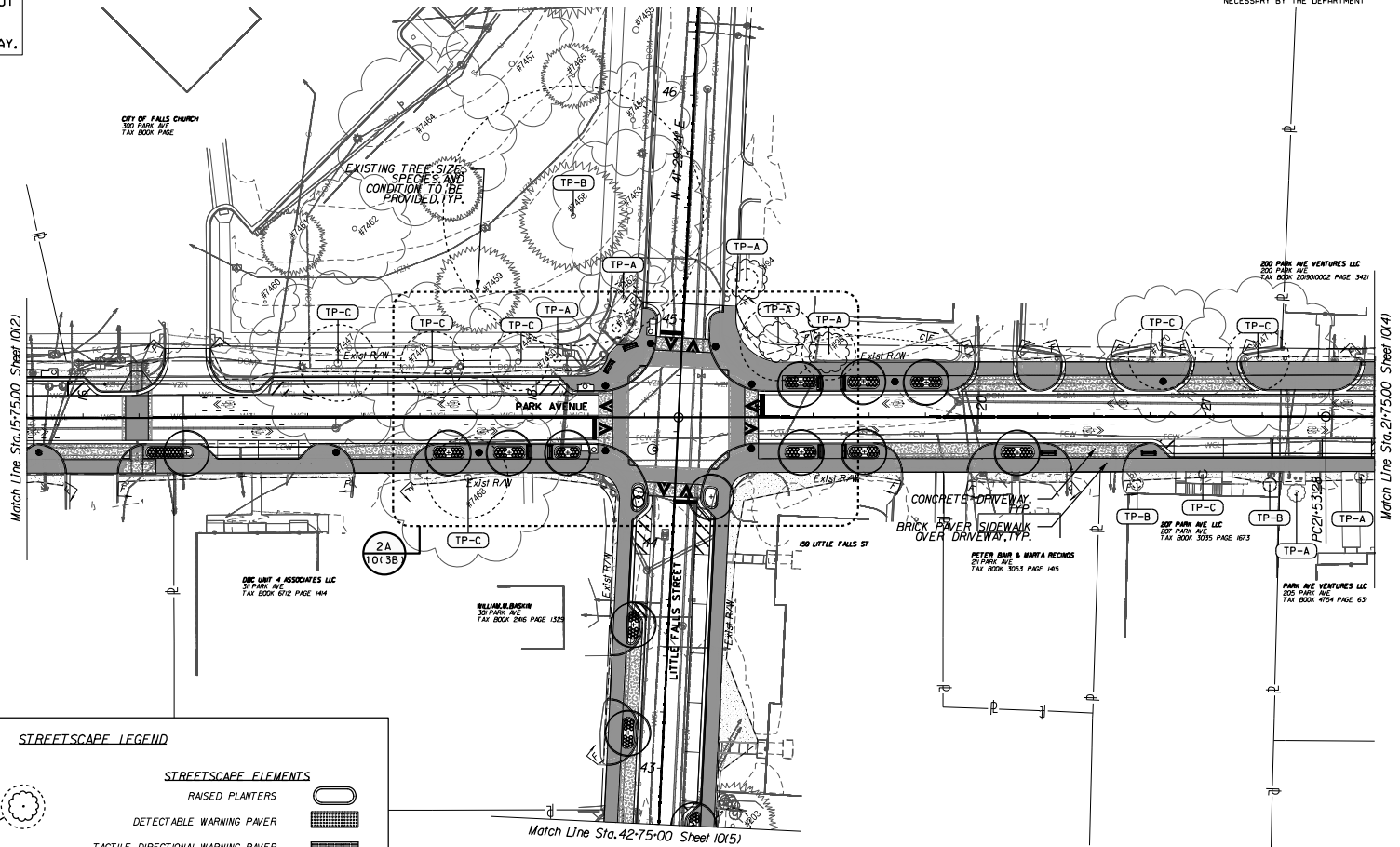
PROJECT MANAGER: Avery Agre, City of Falls Church
 SURVEYED BY, DATE: Christopher Consultants, LLC
 DESIGN BY: Votaw, Inc.
 SUBSURFACE UTILITY BY, DATE: Christopher Consultants, LLC

REVISED	STATE	ROUTE	STATE PROJECT	SHEET NO.
	VA.	N/A	U000-110-195 P101, R201, C501	101(3)

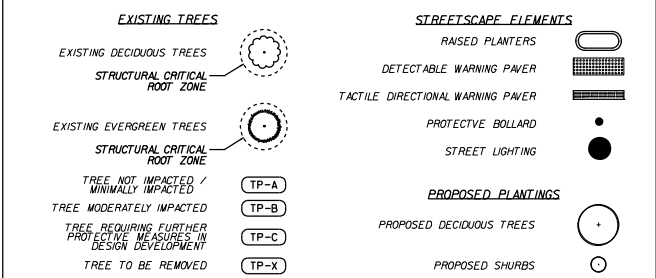
60% PLANS

THESE PLANS ARE UNFINISHED AND UNAPPROVED AND ARE NOT TO BE USED FOR ANY TYPE OF CONSTRUCTION OR THE ACQUISITION OF RIGHT OF WAY.

DESIGN FEATURES RELATING TO CONSTRUCTION OR TO REGULATION AND CONTROL OF TRAFFIC MAY BE SUBJECT TO CHANGE AS DEEMED NECESSARY BY THE DEPARTMENT



STREETSCAPE LEGEND



STREETSCAPE PLANS

SCALE 0 25' 50'	PROJECT U000-110-195	SHEET NO. 101(3)
--------------------	-------------------------	---------------------

PROJECT MANAGER: *Avery Agre*, City of Falls Church
 SURVEYED BY, DATE: *Christopher Consultants, LLC*
 DESIGN BY: *Votaw, Inc.*
 SUBSURFACE UTILITY BY, DATE: *Christopher Consultants, LLC*

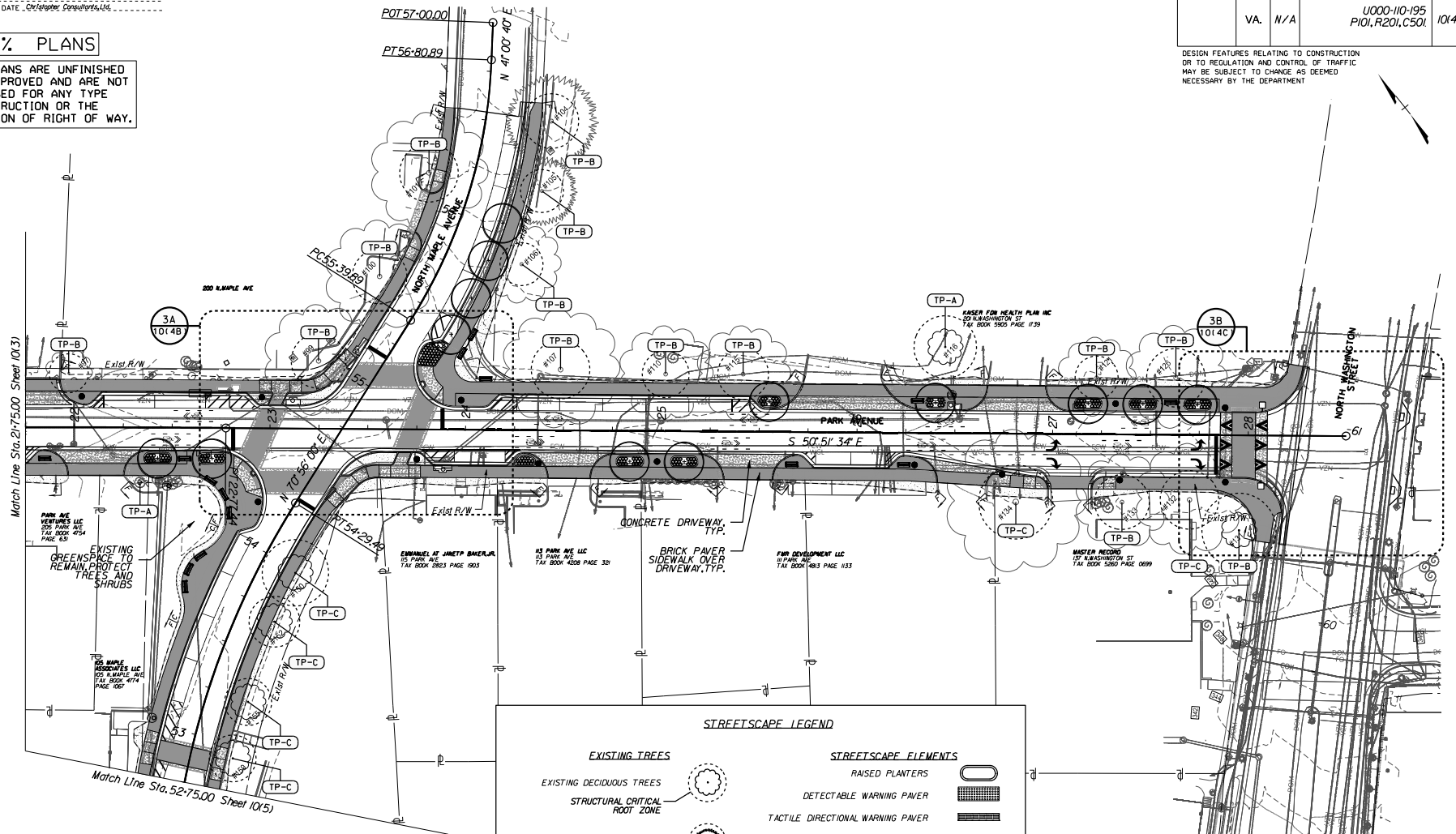
REVISED	STATE	ROUTE	PROJECT	SHEET NO.
	VA.	N/A	U000-110-195 P101, R201, C501	101(4)

DESIGN FEATURES RELATING TO CONSTRUCTION OR TO REGULATION AND CONTROL OF TRAFFIC MAY BE SUBJECT TO CHANGE AS DEEMED NECESSARY BY THE DEPARTMENT



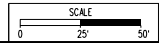
60% PLANS

THESE PLANS ARE UNFINISHED AND UNAPPROVED AND ARE NOT TO BE USED FOR ANY TYPE OF CONSTRUCTION OR THE ACQUISITION OF RIGHT OF WAY.



STREETSCAPE LEGEND

- | | |
|--|--------------------------------------|
| EXISTING TREES | STREETSCAPE ELEMENTS |
| EXISTING DECIDUOUS TREES | RAISED PLANTERS |
| STRUCTURAL CRITICAL ROOT ZONE | DETECTABLE WARNING PAVEMENT |
| EXISTING EVERGREEN TREES | TACTILE DIRECTIONAL WARNING PAVEMENT |
| STRUCTURAL CRITICAL ROOT ZONE | PROTECTIVE BOLLARD |
| TREE NOT IMPACTED / MINIMALLY IMPACTED | STREET LIGHTING |
| TREE MODERATELY IMPACTED | PROPOSED PLANTINGS |
| TREE REQUIRING FURTHER PROTECTIVE MEASURES IN DESIGN DEVELOPMENT | PROPOSED DECIDUOUS TREES |
| TREE TO BE REMOVED | PROPOSED SHRUBS |



STREETSCAPE PLANS

PROJECT: U000-110-195
 SHEET NO.: 101(4)